

DELI WRAPPER



MODEL 630

FEATURES:

- INCLUDES ADAPTER DISC FOR 10"-12" PIZZAS.
- High watt density heating element shrink wraps pizza in seconds.
- Thermostatically controlled heating element provides controlled heat for continuous or intermittent operation.
- (3) thumb screws remove basic protection shroud for cleaning. Heat shroud and stainless steel clean-out tray add to ease of maintenance and cleanability.
- Heat shroud reduces temperature to prevent film sticking and provides extra measure of safety to prevent burns.
- Adjustable pedestal accommodates various sizes of product for shrink wrapping.

ELECTRICAL:

- 120 volts, 12.5 amps, 1150 watts
- Best when operated on an individual branch circuit
- 6' power cord length

DIMENSIONS: (does not reflect shipping dimensions)

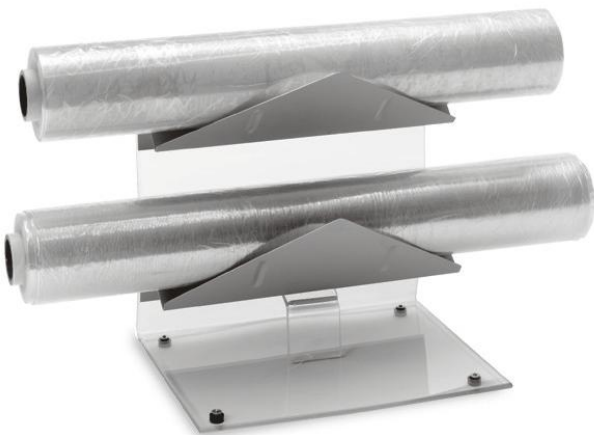
- 7"H x 12"W x 12"D with adjustable supporting surface.
- 14" diameter protective shield

SHIPPING WEIGHT:

Approx. 13 lbs.

AVAILABLE ACCESSORIES:

- MODEL 650: 2 tier dispenser (photo shown)
- MODEL 650-1: Single tier dispenser
- 14" - 16" pizza Adapter Disc (#0016239)
- 6" - 8" pizza Adapter Disc (#0016240)
- **SHRINK FILM:**



Part Number	Sheet Size	Recommended For:	# of Sheets Per Roll
0017011	16 x 16	8" Pizza	1100
0017018	18 x 18	10" Pizza	600
0017008	20 x 20	12" Pizza	500
0017010	22 x 22	14" Pizza	500
0017009	24 x 24	16" Pizza	500



An ISO 9001 Company

WISCO INDUSTRIES®

P.O. BOX #10
OREGON, WI 53575
PHONE: 608-835-3106
FAX: 608-835-8273
www.thepizzaoven.biz

LIMITED WARRANTY:

Wisco Industries, Inc. expressly warrants the product will be free from defects in workmanship and materials for a period of 1 year from the date of shipment. WISCO DISCLAIMS AND EXCLUDES ANY AND ALL OTHER EXPRESS OR IMPLIED WARRANTIES, INCLUDING WITHOUT LIMITATION, ANY AND ALL WARRANTIES OF MERCHANTABILITY OR FITNESS FOR A PARTICULAR PURPOSE.

Buyer agrees that its SOLE AND EXCLUSIVE REMEDY against Wisco and Wisco's SOLE AND EXCLUSIVE LIABILITY arising out of any defect or nonconformity in the product shall be replacement/exchange of such nonconforming countertop food service equipment at Wisco's expense. No countertop food service equipment shall be returned without Wisco's consent. IT IS AGREED THAT WISCO'S MAXIMUM LIABILITY SHALL NOT IN ANY CASE EXCEED THE SALE PRICE FOR THE COUNTERTOP EQUIPMENT CLAIMED TO BE DEFECTIVE OR NONCONFORMING.

MODEL 630-1 DELI WRAP INSTRUCTIONS

UNPACKING AND ASSEMBLY:

- Remove Deli-Wrap from carton
- Remove cardboard from bottom of unit and heating element.
(CAUTION: DO NOT PLUG UNIT IN WITH CARDBOARD HEATING ELEMENT SUPPORT IN PLACE).
- Screw threaded rod into disc.
- Thread wing nut on the opposite end of rod so the wings of the nut face jam nut.
- Thread disc and rod assembly into grille assembly until the height is approx. 4-1/2" to 5".
- Lock wing nut against grille assembly. (The 4-1/2" to 5" dimension given is only a starting place. Due to the differences in wrapping mediums, you may have to adjust your pedestal height to attain best wrapping results.)
- Place grille with pedestal assembly on the brackets riveted to the inner shroud.
- Clean out tray can then be put in place. Clean out tray should be centered between shroud support brackets and resting on the base of the unit.

* You are now ready to plug the unit into a 15amp 115 volt outlet.

CAUTION: THE CARDBOARD SUPPORT MUST BE REMOVED FROM THE HEATING ELEMENT BEFORE ENERGIZING UNIT.

OPERATION: *Additional Operational Instructions found on page 3*

Plug unit in and turn the thermostat switch to the Medium to High position. Pre-heat Deli Wrap machine for approximately 3 minutes.

Place the product being wrapped on the center of the pedestal, immediately tear off a sheet of shrink wrap material from the Deli-Wrap dispenser and place over product paying special attention to the symmetry. Best results will be achieved if the wrapping material is evenly laid over the product.

In approximately 10 to 20 seconds your product will be enveloped and sealed. Remove from pedestal and allow to cool. **CAUTION: DO NOT LEAVE PRODUCT UNATTENDED WHEN WRAPPING.**

MAINTENANCE:

Unplug unit before any cleaning, servicing or maintenance is performed.

The outer shroud, inner shroud, clean out tray and grille assembly with pedestal can be removed for daily cleaning. **CAUTION: ALLOW UNIT TO COOL BEFORE REMOVING ANY PARTS. DO NOT IMMERSE BASE ASSEMBLY OF THE DELI WRAP IN WATER.**

Replace all parts after cleaning.

The Deli-Wrap has been tested and approved by Underwriters Laboratories, to be a safe and durable product when used and maintained in the manner in which it was intended.

Pizzawrap and Capper

FAST and EFFICIENT

4 SIMPLE
STEPS



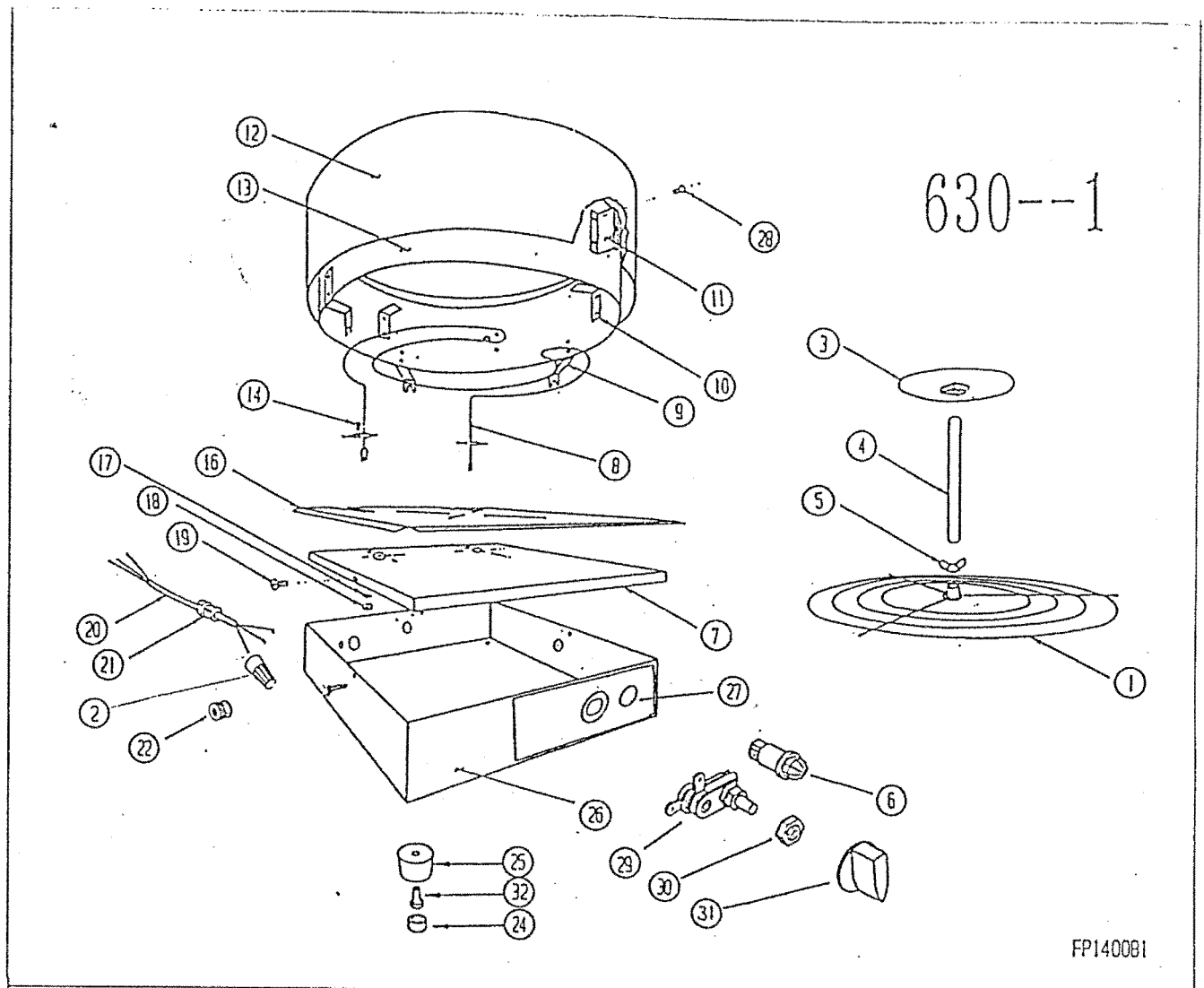
Step 1: Tear shrink film at the perforation

*Be sure to place film on dispenser so it feeds from the bottom. If you pull film from "over" the roll tearing could occur.

Step 2: Place cardboard round w/pizza on heated deli wrapper;
Place shrink film on top of pizza

Step 3: Allow deli wrapper to shrink film around pizza

Step 4: Place wrapped pizza in refrigerator for storage; this unit is not intended to wrap pizzas for freezing



FP140081

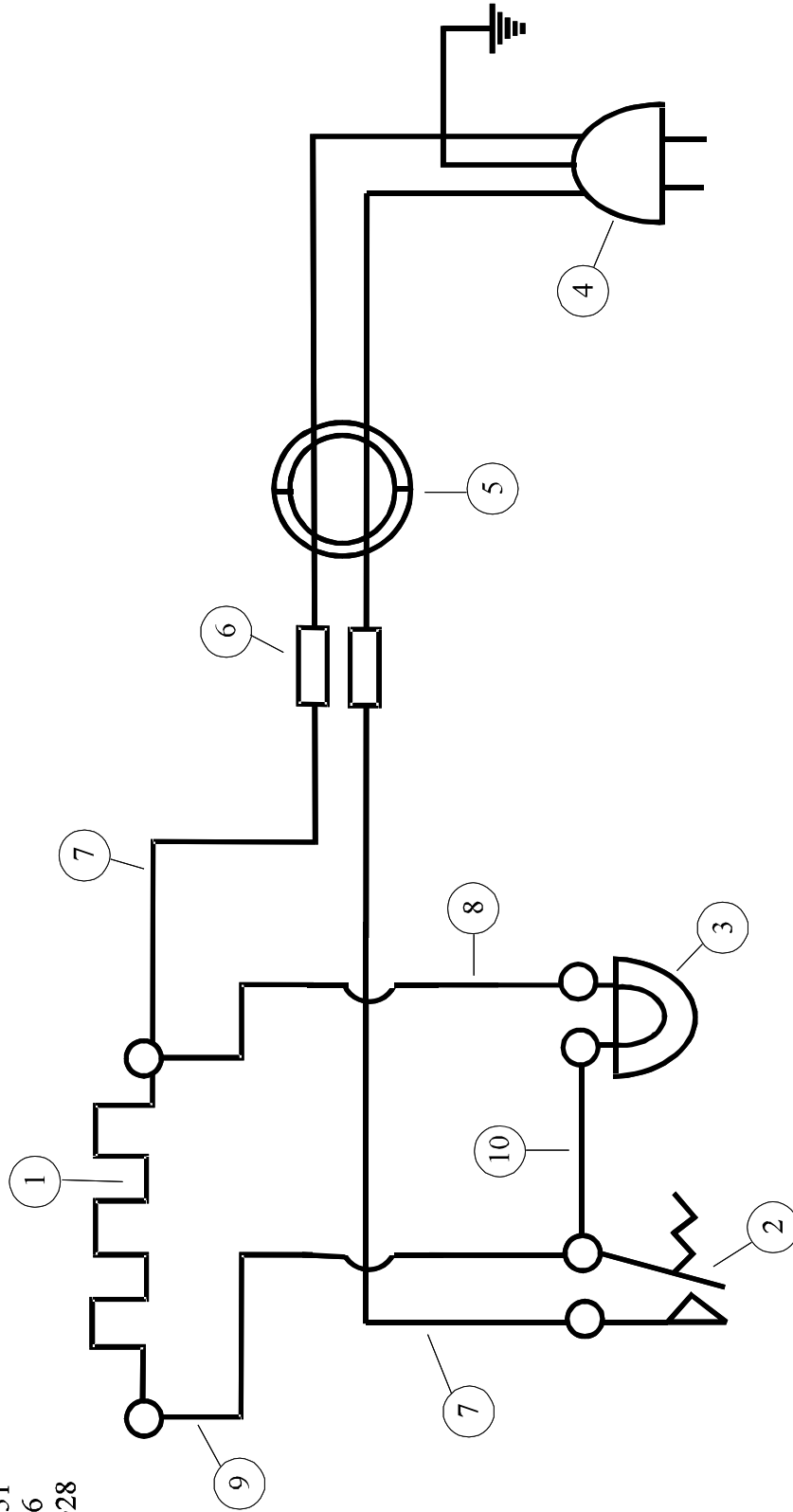
PARTS LIST.

Misc. 630 LE:10

KEY	Q.	DESCRIPTION.	PART NO:	KEY	Q.	DESCRIPTION.	PART NO:
1	1	GRILL.	0016002	17	3	# 10 LOCK WASHER.	009124
2	2	WIRE NUT.	00140	18	3	# 10-24 HEX NUT.	00142
3	1	DISK, / WELD NUT.	0016003	19	7	# 8 X 3/8 SHT.M.SCR.	00150
4	1	3/8-16 THREADED ROD.	0016011	20	1	POWER CORD.	00448
5	1	3/8-16 WING NUT.	0016009	21	1	STRAIN RELIEF.	0016024
6	1	PILOT LIGHT.	09092	22	3	THUMB NUT.	00116
7	1	COVER.	0016006	23			
8	1	CALROD ELEMENT.	0016000	24	4	RUBBER INSERT	00475
9	3	BRACKET.	0016016	25	4	FEET.	0018032
10	3	BRACKET GRILL.	0016017	26	1	CASE	0016215
11	3	Z-FLANCHE.	0016029	27	1	630-1 CONTROL DECAL.	1013154
12	1	OUTER SHROUD.	0016019	28	2	RIVET 1/8"X 5/32' LG.	00469
13	1	INNER SHROUD.	0016008	29	1	THERMOSTAT ASSEMBLY.	0016037
14	3	10-24 X3/8RH .SCR.	00151	30	1	THERMOST.NUT	↑
15				31	1	THERMOST.KNOB.	00100
16	1	CLEANOUT TRAY.	0016018	32	4	#8 X 3/4 PHIL..PAN. HO. SCR.	008223

MODEL 630 WIRING DIAGRAM

1. 1500w Heating Element #0016000
2. AP 39 Adj. Thermostat #0016015
3. Red Lamp #009092
4. Cord Set #00448
5. Strain Relief #0016024
6. Wire Nuts #00140
7. 13" Wire #00129
8. 11" Wire #009551
9. 11" Wire #00176
10. 6" Wire #0010028



WISCO INDUSTRIES INC.
REPAIR PARTS FOR MODEL 630

PART NO: DESCRIPTION:

0016015 THERMOSTAT
(on/off switch-new style-says HI-MED-LOW)

00100 THERMOSTAT KNOB

0016119 ON/OFF SWITCH (old style unit)

0016030 *WIRE FOR ON/OFF SWITCH

0016031 *WIRE FOR ON/OFF SWITCH
*need 1 of ea. 0016030 & 0016031

009092 PILOT LIGHT

009551 WIRE

00448 CORD SET

00131 STRAIN RELIEF

0016000 HEATING ELEMENT - 1500W

0016009 WING NUT

0016011 THREADED ROD

0016241 BAG OF PARTS
(incl. threaded rod, wing nut, disc w/nut assy & hex nut)

0016017 SUPPORT BRACKET

0016018 CLEANOUT TRAY

0016220 INNER & OUTER SHROUD ASSY

0016245 GRILL STAND - COMPLETE ASSY (Incl. stand & #0016241)

00116 THUMB NUT

00129 INTERNAL WIRE - 13-1/2"

00176 INTERNAL WIRE

0018032 FEET

00475 RUBBER INSERTS FOR FEET

00140 WIRE NUT

00150 #8 X 3/8" SHEET METAL SCREW

00151 #10-24 X 1/4" ROUND HD SCREW

009124 # 10 LOCKWASHER

0016002 GRILL ONLY (stand)

0016012 CARTON

0016239 10-1/2" ADAPTER DISC (for 14"-16" pizzas)

0016240 3-1/2" ADAPTER DISC (for 6"-8" pizzas)

0016244 DISC W/ NUT ASSY (for 10" - 12" pizza)